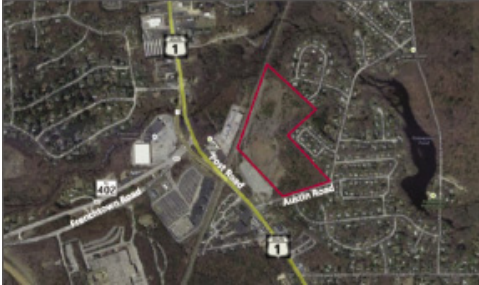


Surprenant of MG Commercial sells 32 acres for \$850,000

Gerry Surprenant, executive vice president of MG Commercial sold a 32-acre, proposed 16 lot residential subdivision known as Austin Meadows at 84 Austin Rd.

The site, which is located near Post Rd. and the East Greenwich town line, is unimproved raw land. The buyer is Green Hill Builders of RI from Narragansett. Site construction is planned for this spring and Green Hill plans on building residential homes on each lot.

Surprenant represented the seller and Tracy Duff of Keystone Realty represented the buyer. The sale price was \$850,000.



Austin Meadows at 84 Austin Road - North Kingstown, RI



Gerry Surprenant, MG Commercial